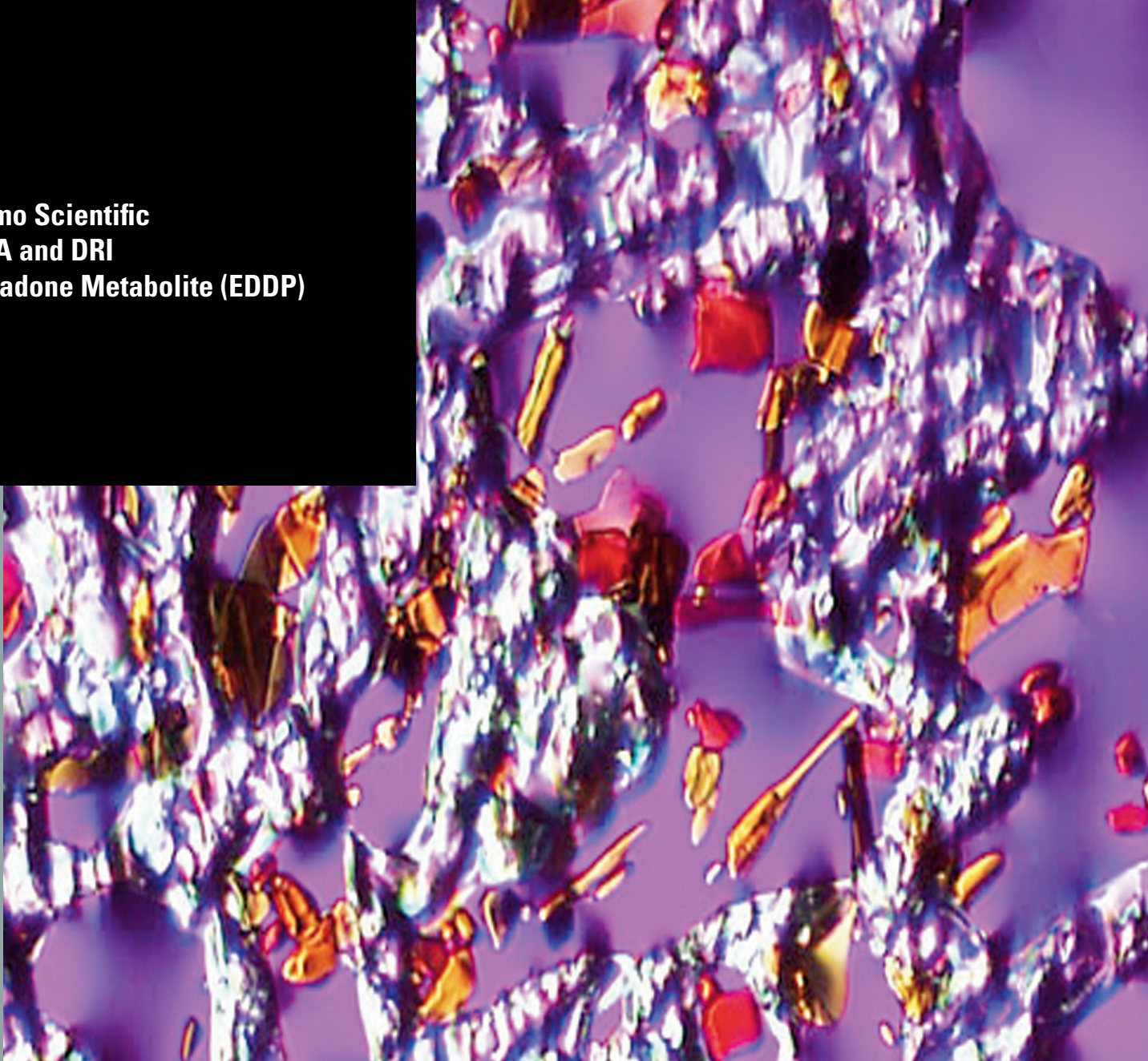


**Thermo Scientific
CEDIA and DRI
Methadone Metabolite (EDDP)**

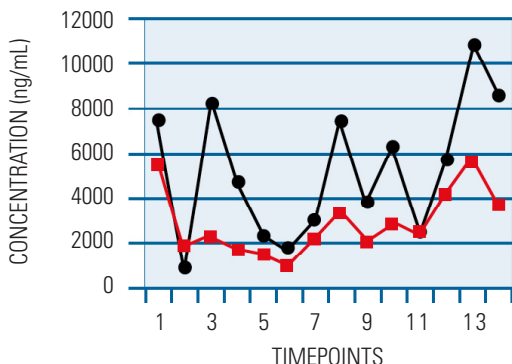


As the innovator in Drugs of Abuse testing, we have produced an assay to revolutionize methadone screening. The CEDIA® and DRI EDDP assays are fast, accurate and reliable methods available for methadone metabolite screening.

- Protects clients who rapidly metabolize methadone
- Safeguards clients from incorrect intervention
- Identify methadone “spikers”
- Provides pharmacologically accurate results with virtually no cross reactivity to methadone
- Applications for a variety of clinical chemistry analyzers

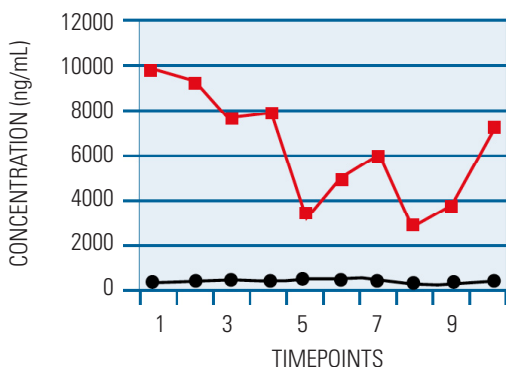
EDDP provides more information than methadone screening alone.

● Methadone(ng/mL) ■ EDDP(ng/mL)
TYPICAL METHADONE CLIENT PROFILE



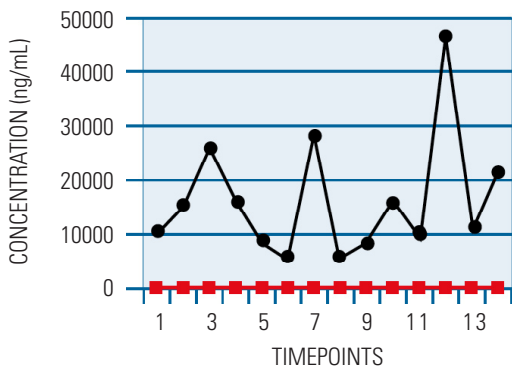
In this subject, all specimens screened over a 12 week period were positive for both methadone and its metabolite. While levels are variable, all were above assay cutoff concentrations for both methadone and EDDP.

“FAST METABOLIZER”



This subject illustrates a case of rapid metabolism that is probably drug induced. The patient had very high levels of EDDP in all specimens collected but levels of methadone ranging from 121 to 284 ng/mL. In this patient, use of methadone screens alone would lead to incorrect conclusions about compliance with methadone treatment since they are all negative.

PROBABLE METHADONE SPIKER



This figure shows a patient with extraordinarily high levels of methadone, ranging up to more than 40,000 ng/mL (4-10 times higher than typical levels). In contrast to specimens from most patients, no EDDP was found in the specimens from this subject, strongly suggesting diversion of the methadone and “spiking” of the urine to pass the drug screens.

Order 1-800-232-3342

Methadone Metabolite (EDDP) Reagent Kit	
Catalog #	Size
CEDIA	
100087	3x17 mL
100096	65 mL
1868217	495 mL
DRI	
100115	100 mL
100116	500 mL

Methadone Metabolite Calibrators		
CEDIA	5 mL	15 mL
Primary Cutoff	1815326	1815334
Secondary Cutoff	1730428	1730517
Intermediate*	1730380	1732218
High*	1730398	1732226
Negative Calibrator*	1557416	1661388
* Use for Semi-quantitative protocol		
DRI		
	10 mL	
Methadone Metabolite 150ng/mL	100117	
Methadone Metabolite 300ng/mL	100118	
Methadone Metabolite 1000ng/mL	100120	
Methadone Metabolite 2000ng/mL	100122	

Methadone Metabolite Controls*		
	3 x 5 mL	Levels Low & High
MGC Primary DAU Control Set	100200	750, 1250
MGC Clinical DAU Control Set	100201	75, 125
MGC Specialty DAU Control Set	1815440	75, 125
* For use with CEDIA and DRI		

Diagnostics

U.S.A.

46360 Fremont Blvd.
Fremont, CA 94538 USA
Tel. 800-232-3342
Fax: 510-979-5002

Canada

Tel. 905-286-4290
contact@diagnostix.ca

Germany

Tel. + 49 851 88689 0
microgenics.DE.info@thermofisher.com

Australia

Tel. + 61 2 9649 9599
info@microgenics.com.au

Spain

Tel. + 34 93589 8338
microgenics.ES.info@thermofisher.com

United Kingdom

Tel. + 44 1727 853151
microgenics.UK.info@thermofisher.com

© 2008 Thermo Fisher Scientific Inc. All rights reserved.
All the trademarks are the property of Thermo Fisher Scientific Inc. and its subsidiaries.

2008 08 01